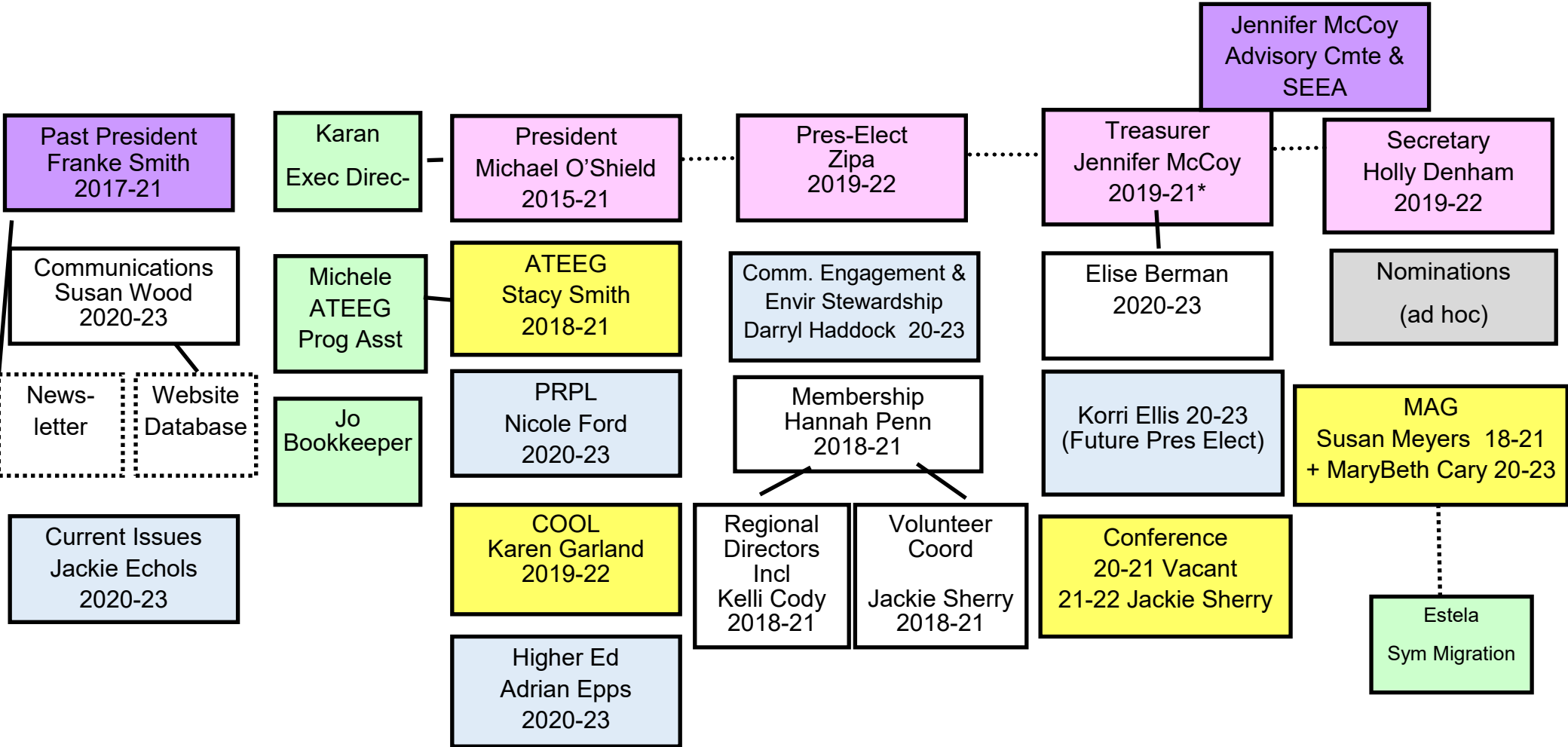


Proposed Board Structure for 2020-21
Mentoring Map

Each member of the Executive will act as a resource/ mentor for the board positions located in their column. The Executive Director reports to the President, and the supports all of the Board members and committees. The Bookkeeper, as a contract employee, communicates with the Treasurer to make sure they have the most up to date financials. The ATEEG Administrator, as a contractor, works with the ATEEG Liaison. The Symbolic Migration Liaison, as a contract employee, reports to the MAG Committee.



Notes:

1. Kelli and Jackie will be voting Board members for the remainder of their terms but in the future those positions will be considered volunteer activities under the Member Service Committee.
2. The Treasurer position is being filled by Jennifer McCoy until a qualified replacement can be found.
3. The Conference Committee Chair is vacant.
4. Fundraising Committee and Strategic Partnerships Committee to be assigned to incoming board members