

Butterfly Information

Your name _____ Partner's name _____

Common name of your butterfly Spicebush swallowtail

Latin name of your butterfly: Papilio troilus

Where do females lay their eggs? sassafras/spicebush + red bay

How does this butterfly survive the winter?

overwinters in pupa stage - spring hatch

How long do individuals in this species live? _____

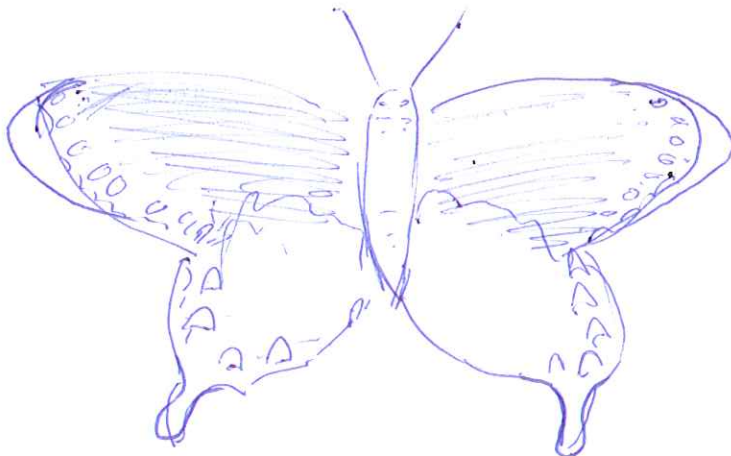
What is its habitat (Where would you find it? What plants live there?)

woodlands, forest edge, wooded swamp, pastures, old fields, suburban gardens

What do adult butterflies eat? nectar - non discriminate
giant weed, yucca, dogbane, azalea

Make a sketch or provide a picture of your butterfly, include the wingspan measurement.

3.5 - 5.0 in



Plants Your Butterfly Needs

Your butterfly Spicebush swallowtail

Caterpillar host plant information

Plant name: Sassafras

Height of plant: up to 90 ft

Blooming months: March-April

Type of plant (annual, perennial, woody): woody - tree/shrub

Sun/Shade requirements: Full SUN

Soil requirements: moist, rich, well drained, sandy loams - SUN

Flower color: yellow

Picture:

Nectaring plant information (Choose one or two suitable nectaring plants.)

Plant name: ~~Azalea~~ COMMON MILKWEED

Height of plant: _____

Blooming months: _____

Type of plant (annual, perennial, woody): perennial woody FORB

Sun/Shade requirements: _____

Soil requirements: _____

Flower color: _____

Picture:

Butterfly Information

Your name Traci, Ariyana, Dawn Partner's name _____

Common name of your butterfly Red Spotted Purple

Latin name of your butterfly: limenitis arthemis astyanax

Where do females lay their eggs? ~~fallen~~ wild cherry, aspen
poplar

How does this butterfly survive the winter?

stay in larva stage

How long do individuals in this species live? 6-14 days

What is its habitat (Where would you find it? What plants live there?)

Moist Forests, willow

What do adult butterflies eat? ~~wild cherry, aspen, poplar~~

black cherry, nectar, carrion, fruit, dung, sap

Make a sketch or provide a picture of your butterfly, include the wingspan measurement.

Plants Your Butterfly Needs

Your butterfly Red-spotted purple

Caterpillar host plant information

Plant name: Wild cherry, aspens, poplars

Height of plant: _____

Blooming months: _____

Type of plant (annual, perennial, woody): _____

Sun/Shade requirements: _____

Soil requirements: _____

Flower color: _____

Picture: _____

Nectaring plant information (Choose one or two suitable nectaring plants.)

Plant name: Black cherries ^(Prunus serotina) ^{Also,} (Salix) the Willow

Height of plant: _____

Blooming months: Black cherries produce berries in late summer

Type of plant (annual, perennial, woody): woody, (tree)

Sun/Shade requirements: _____

Soil requirements: _____

Flower color: white / purple berries

Picture: _____

Butterfly Information

Your name _____ Partner's name _____

Common name of your butterfly Gulf Fritillary

Latin name of your butterfly: *Agraulis vanillae*

Where do females lay their eggs? passionflower leaves

How does this butterfly survive the winter?
as an adult - (migrate to FL)

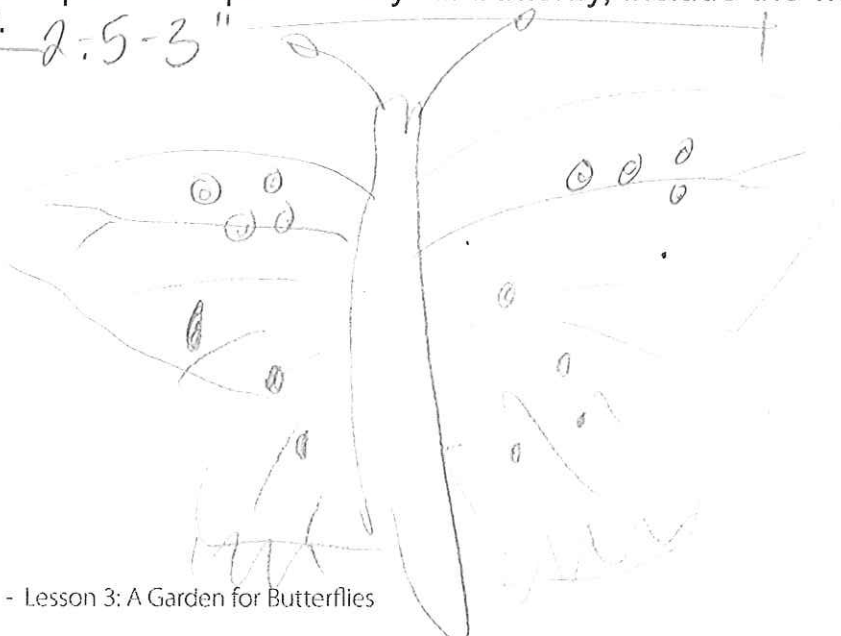
How long do individuals in this species live? 6-8 weeks

What is its habitat (Where would you find it? What plants live there?)
open areas w/ passionflowers

What do adult butterflies eat? nectar (lantana, shepherd's needle, composites, may pop)

Make a sketch or provide a picture of your butterfly, include the wingspan measurement.

2.5-3"



Plants Your Butterfly Needs

Your butterfly Gulf Fritillary

Caterpillar host plant information

Plant name: Maypop, Passion Flower Vine

Height of plant: _____

Blooming months: _____

Type of plant (annual, perennial, woody): _____

Sun/Shade requirements: _____

Soil requirements: _____

Flower color: _____

Picture: _____

Nectaring plant information (Choose one or two suitable nectaring plants.)

Plant name: Maple, Shepherd's Needle

Height of plant: _____

Blooming months: Early

Type of plant (annual, perennial, woody): _____

Sun/Shade requirements: _____

Soil requirements: _____

Flower color: _____

Picture: _____

Butterfly Information

Your name _____ Partner's name _____

Common name of your butterfly Viceroy

Latin name of your butterfly: *Limenitis archippus*

Where do females lay their eggs? singly on tip of host leaves (willows)

How does this butterfly survive the winter?

caterpillar spends winter in hibernaculum

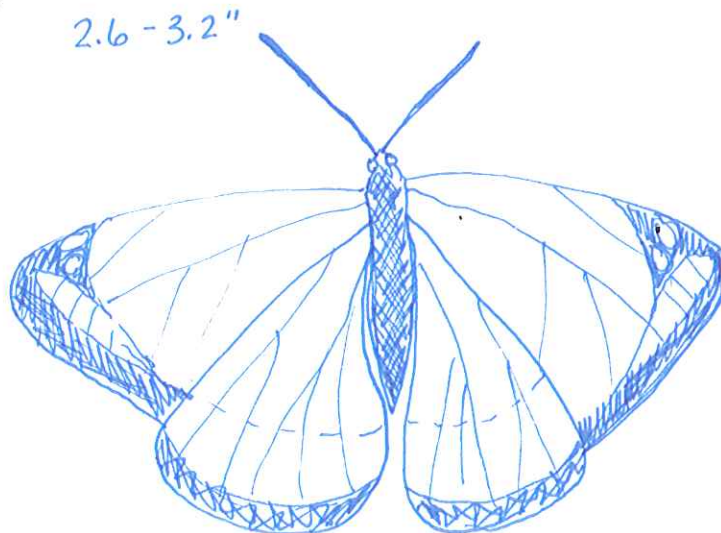
How long do individuals in this species live? 38 days - 65 days

What is its habitat (Where would you find it? What plants live there?)

moist shrubby areas; swampy areas. willows, aspen, cottonwood, fruit trees

What do adult butterflies eat? nectar, sap, dung. butterfly bush, coneflowers + milkweeds

Make a sketch or provide a picture of your butterfly, include the wingspan measurement.



3" avg
wingspan

Plants Your Butterfly Needs

Your butterfly Viceroy

Caterpillar host plant information

Plant name: Black willow, Carolina willow, Weeping willow, Poplars

Height of plant: 80' - 100', 60'

Blooming months: Spring ~~Summer~~

Type of plant (annual, perennial, woody): Woody

Sun/Shade requirements: Full sun

Soil requirements: Wet, rich

Flower color: White

Picture:

Nectaring plant information (Choose one or two suitable nectaring plants.)

Plant name: Butterfly Bush, Cone Flowers, Milk Weed

Height of plant: _____

Blooming months: All Summer

Type of plant (annual, perennial, woody): Perennial

Sun/Shade requirements: Full Sun

Soil requirements: _____

Flower color: Purple

Picture:

Butterfly Information

Your name Jon, Matt Kathleen Partner's name _____

Common name of your butterfly Black Swallowtail

Latin name of your butterfly: Papilio polyxenes

Where do females lay their eggs? host leaves

How does this butterfly survive the winter?

Pupa

How long do individuals in this species live? _____

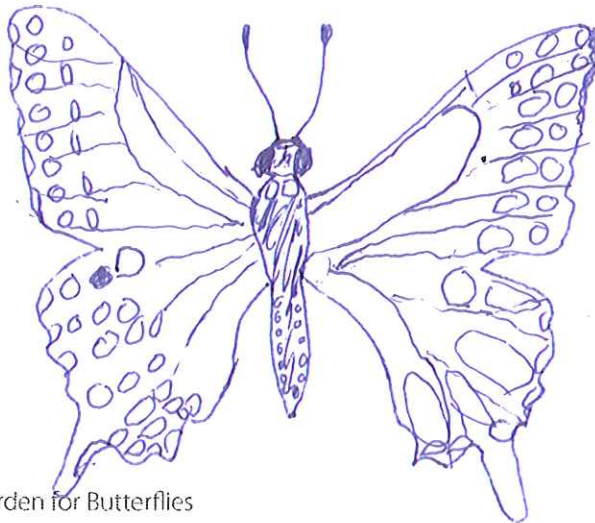
What is its habitat (Where would you find it? What plants live there?)

Varied open spaces: Fields, suburbs, Fresh & tidal margins, deserts, roadsides, etc. Seldom forest interiors. Some populations are coastal.

What do adult butterflies eat? Nectar, pudding

Make a sketch or provide a picture of your butterfly, include the wingspan measurement.

2.5 to 4.2



Plants Your Butterfly Needs

Your butterfly Black Swallowtail

Caterpillar host plant information

Plant name: Carrot, dill, parsley, parsnip

Height of plant: ~~1/2 to 1 m~~ up to 1 M tall

Blooming months: June -> August

Type of plant (annual, perennial, woody): biennial / annual / perennial

Sun/Shade requirements: full sun

Soil requirements: sandy loam / loam

Flower color: white / pale pink

Picture:

Nectaring plant information (Choose one or two suitable nectaring plants.)

Plant name: Milkweed, Red Clover, Butterfly Bush, Sunflowers

Height of plant: ~~1/2 to 1 m~~ up to 1 M tall

Blooming months: June -> August

Type of plant (annual, perennial, woody): annual / woody

Sun/Shade requirements: full sun

Soil requirements: sandy loam / loam

Flower color: white / purple

Picture:

Butterfly Information

Your name Susie Criswell Partner's name Liz Swafford Angie Jenkins

Common name of your butterfly Pearl Crescent

Latin name of your butterfly: Phyciodes tharos

Where do females lay their eggs? underside of host leaves, asters

How does this butterfly survive the winter?

Larva

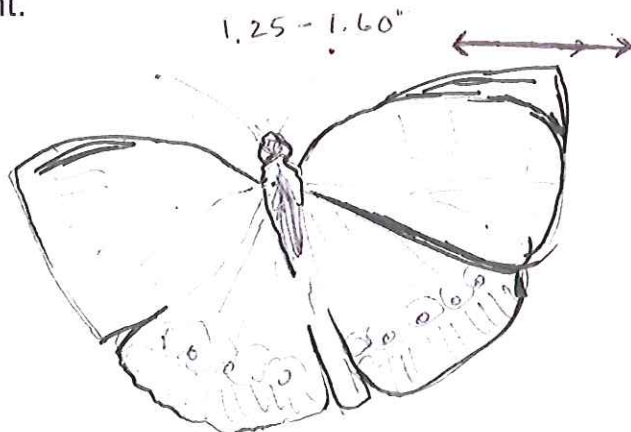
How long do individuals in this species live? up to 2 months

What is its habitat (Where would you find it? What plants live there?)

Open areas

What do adult butterflies eat? Nectar, puddling

Make a sketch or provide a picture of your butterfly, include the wingspan measurement.



(5/28/20)

Plants Your Butterfly Needs

Your butterfly Pearl Crescent

Caterpillar host plant information

Plant name: Frost Aster, Smooth ~~Blue~~ Aster (113)

Height of plant: 1-4'

Blooming months: July-Oct (6 weeks)

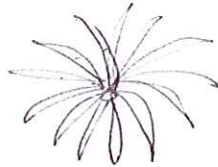
Type of plant (annual, perennial, woody): perennial

Sun/Shade requirements: full sun (6 hours)

Soil requirements: Dry, open places

Flower color: Pinkish-purple

Picture:



Nectaring plant information (Choose one or two suitable nectaring plants.)

Plant name: Purple Cone-flower

Height of plant: 1-4 ft.

Blooming months: June - August (6 wks)

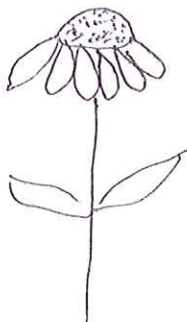
Type of plant (annual, perennial, woody): Perennial

Sun/Shade requirements: Sun to light shade

Soil requirements: Prairies, rocky glades, woodland edges

Flower color: Purple

Picture:



Butterfly Information

Your name _____ Partner's name _____

Common name of your butterfly American Painted Lady

Latin name of your butterfly: Vanessa virginiensis
nectar

Where do females lay their eggs? daisies, burdocks, everlasting
cudweed, pussytoes

How does this butterfly survive the winter?

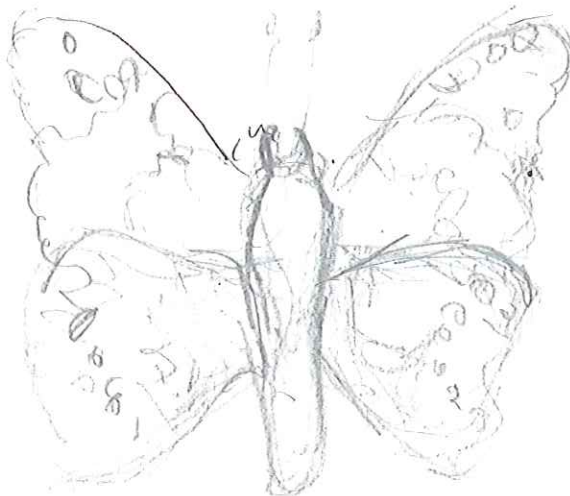
How long do individuals in this species live? Feb. - Nov.
2 broods per year

What is its habitat (Where would you find it? What plants live there?)

container garden to open field -
whole US & into Canada, but found more
abundant on east coast -

What do adult butterflies eat? dogbane, goldenrod, asters,
buttonbush, daisy, mallow, yarrow, zinnia

Make a sketch or provide a picture of your butterfly, include the wingspan measurement.



Plants Your Butterfly Needs

Your butterfly AMERICAN PAINTED LADY

Caterpillar host plant information

Plant name: ^①DAISIES ^②GERANIUMS ^③BURDOCK, PUSSY TOES, ^{CUD WEED}CUDWEED, IRON WOOD

Height of plant: ^①1-3 FT ^②

Blooming months: ^①LATE SUMMER

Type of plant (annual, perennial, woody): ^①PERENNIAL

Sun/Shade requirements: ^①FULL SUN / PART SHADE

Soil requirements: ^①MOIST WELL DRAINED

Flower color: ^①YELLOW CENTER
PURPLE VIOLET, WHITE
REDDISH PETALS

Picture: 

Nectaring plant information (Choose one or two suitable nectaring plants.)

Plant name: Zinnia

Height of plant: 1-3 ft

Blooming months: midsummer to fall

Type of plant (annual, perennial, woody): annual

Sun/Shade requirements: full sun

Soil requirements: well drained

Flower color: Brilliantly mixed color

Picture:



Butterfly Information

Your name Brian Partner's name Cat & Carrie

Common name of your butterfly Buckeye

Latin name of your butterfly: Junonia coenia

Where do females lay their eggs? ~~Shagbush~~ Wild petunia, plantain

How does this butterfly survive the winter?

migrates to overwinter in Gulf Coast locations

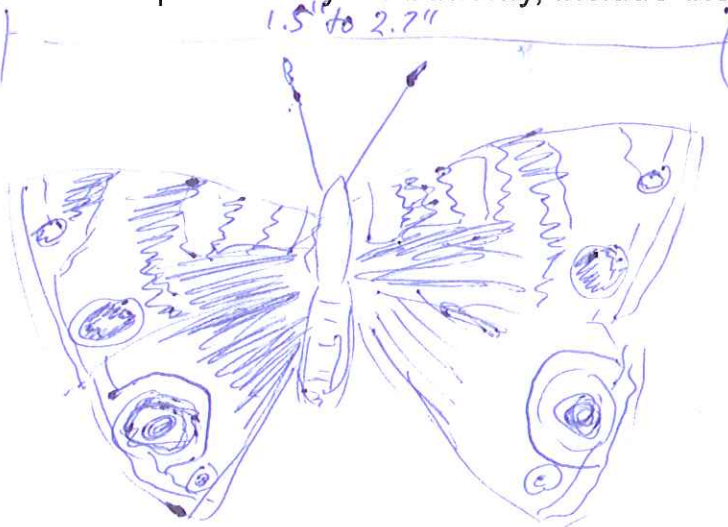
How long do individuals in this species live? 31 to 76 days

What is its habitat (Where would you find it? What plants live there?)

fields, pastures, roadsides, garden, disturbed site
Aster, milkweeds, monkey flowers

What do adult butterflies eat? $4 + 14 + 7 + 6$ $14 + 28 + 14 + 20$
Nectar - aster, shagbush, aster

Make a sketch or provide a picture of your butterfly, include the wingspan measurement.



Plants Your Butterfly Needs

Your butterfly Buckeye

Caterpillar host plant information

Plant name: Plantains (Snapdragons) Wild Petunia

Height of plant: 6-12 in high

Blooming months: May + June

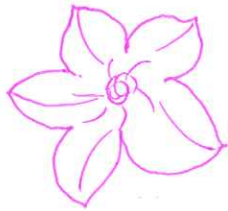
Type of plant (annual, perennial, woody): perennial

Sun/Shade requirements: partial to full shade

Soil requirements: ph 6.1 - 7.8, drought tolerant

Flower color: violet/lavender

Picture:



Nectaring plant information (Choose one or two suitable nectaring plants.)

Plant name: Milkweed (Asters) Snapdragons!

Height of plant: 6 inches to 4 ft high, 1 in to 2 ft wide

Blooming months: summer to fall

Type of plant (annual, perennial, woody): annual

Sun/Shade requirements: partial to full sun

Soil requirements: slightly acidic, if clay must be amended

Flower color: white, pink, purples, red, orange & yellow

Picture:

